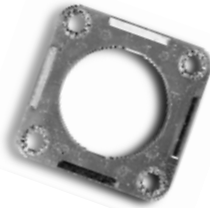


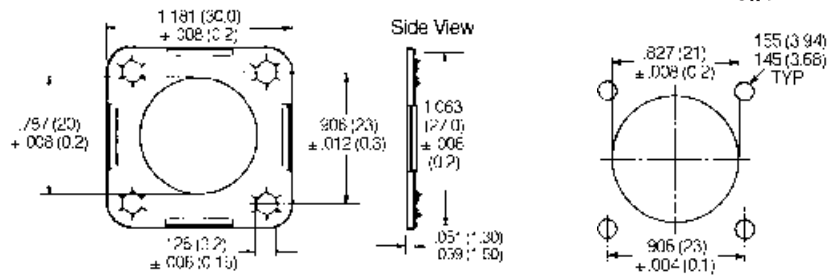


Mounting Plate

For 2 – 4 Circuit Plug



066-8516-000 for use with
120-8552-200
120-8552-201
120-8552-202



Mounting Dimensions

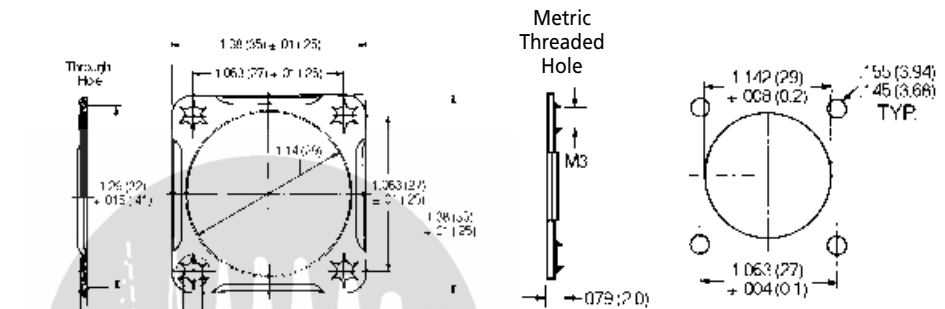


Use Nut plate part number M85528/2-14A.
Use Sealing Screws for mounting, see Accessories page 22.

For 8 – 10 Circuit Plug



066-8516-002 (Through-Hole) for use with
120-8552-305
120-8552-306
120-8552-307

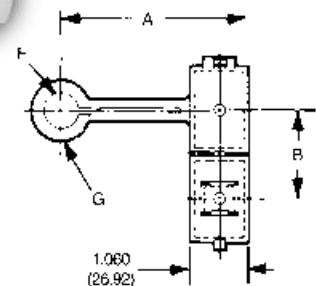
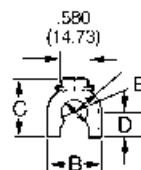
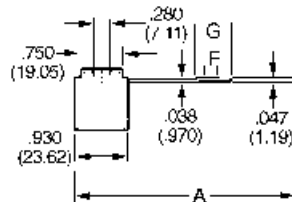
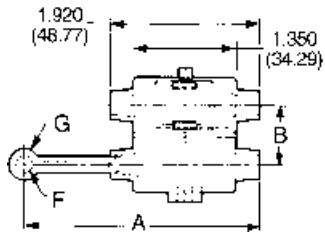
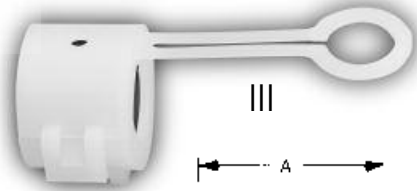
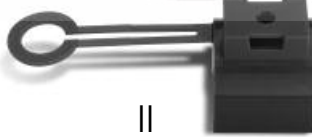


Mounting Dimensions



Use Nut plate part number M85528/2-18A.
Use Sealing Screws for mounting, see Accessories page 22.

Mounting Clip (Sure-Seal® only)



Style	Body Identifier	Part Number	Colors	A Max.	B +/- .01	C	D	E	F Max.	G Max.
I	SS-1C	026-0452-000	Black	3.185 (80.89)	.740 (18.80)	-	-	-	.210 (5.33)	.390 (9.91)
II	SS-2C	029-0263-000	Red	2.443 (62.04)	.886 (22.50)	1.000 (25.40)	.420 (10.67)	.420 (10.67)	.400 (10.16)	.650 (16.51)
II	SS-3-4C	029-0262-000	Yellow	2.443 (62.04)	.926 (23.52)	1.053 (26.74)	.450 (11.43)	.480 (12.19)	.400 (10.16)	.650 (16.51)
III	SS-5-7C	026-0450-000	Natural	3.045 (77.34)	1.395 (35.43)	-	-	-	.610 (15.49)	.910 (23.11)
III	SS-8-10C	026-0451-000	Black	3.045 (77.34)	1.520 (38.61)	-	-	-	.660 (16.76)	.960 (24.38)